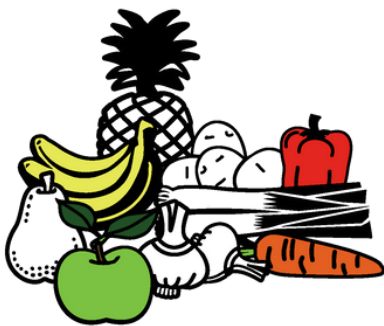


What we do



At FareShare South West, we join the dots between food waste and hunger, turning an environmental problem into social good.

We source quality surplus food that would otherwise go to waste - from farmers, manufacturers, suppliers and retailers - and redistribute it to our members: local charities, schools and community groups who provide meals and other support services across the south west.



SURPLUS FROM THE FOOD INDUSTRY

FARESHARE SOUTH WEST

OUR MEMBER CHARITIES,
SCHOOLS AND
ORGANISATIONS

Members pay a membership fee in return for this service. The value of food our members receive far outweighs this fee. For example, a member receiving 70 kgs of food per week saves over £10,000 every year compared to buying that food at standard retail prices.

FareShare South West's members are frontline organisations working directly with people in their community. By becoming a member, we commit to providing you with food for at least 50 weeks of the year (unless you choose to be a term-time only member). **We do not provide food support to individuals.**

Are we the right fit for your organisation?

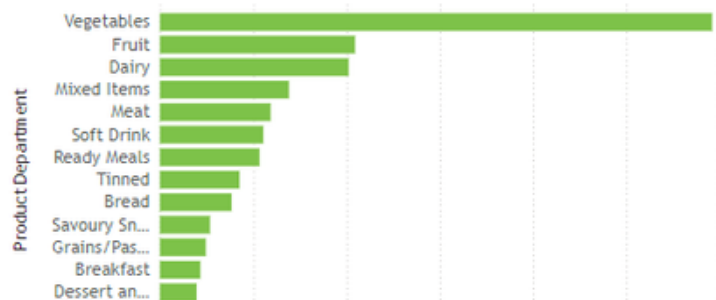
Before you start the path to membership, please be aware of the following key points:

This is a paid service

FareShare South West is a part of the national FareShare network, but we are a small independent charity. We rely on membership fees, donations, grants and our volunteers to run our warehouses and deliver food. **We cannot provide you with free food.**

Weight of food is guaranteed, types of food are not

Because the food we receive is surplus, we can never guarantee the exact food that members will receive. The majority of the surplus we receive is fresh vegetables, dairy, and fruit.



We build a food profile for each of our members that meets each organisation's needs, and every week we put together an order for you based on the stock we have. However, we can't promise to provide you with (for example) only tinned food or ready meals.

The minimum order from our **Bristol warehouses** is 70 kilograms per week. The minimum weekly order from our **Plymouth warehouse** is 100 kilograms per week.

Delivery is dependent on location

Our volunteer drivers make deliveries across the south west from our warehouses in Bristol and Plymouth, and via our partner charity Exeter Food Action. We support charities from Gloucestershire to St Erme in Cornwall, and we'll always do our best to reach you, but it may not be possible for us to add you on a van route. **We welcome members who are able to collect from one of our warehouses!**

If your project matches with what we offer (see above), we'd love to hear from you.

If you are closest to Bristol or Exeter: members@fareshareouthwest.org.uk

If you are closest to Plymouth: rachel.connett@faresharesouthwest.org.uk