



SUPPORTING YOUR ORGANISATION WITH GOOD FOOD FROM FARESHARE SOUTH WEST

From marvellous meat, dairy and fish to flavoursome fruit and veg, the food we save is good quality, in-date and could help you provide a healthy varied menu for the people you support.



What we do



FareShare is the UK's largest charity fighting hunger and food waste. We redistribute good food that would otherwise go to waste to frontline charities and community groups supporting vulnerable people.

There are currently **21 FareShare Regional Centres** operating across the UK. We at FareShare South West are based in our Bristol warehouse. We redistribute surplus food to over 140 charities and community organisations in the region, from lunch clubs in Chippenham to homeless charities in Taunton!

Good food for your service users

FareShare works with national, regional and local food growers, manufacturers and retailers, accessing quality surplus food for redistribution.

Food becomes surplus for a myriad of reasons from packaging errors to short date coding or cosmetic imperfections. But all the food we provide is **within its use-by or best before date** and we follow stringent policies and procedures for storage and transportation to meet all **food safety legislation**.

The types of food received by our charity members can vary from week to week. We appreciate that this is a challenge, inherent with working with surplus, but it can also be a bonus, sometimes offering unexpected treats as well as good old staples.



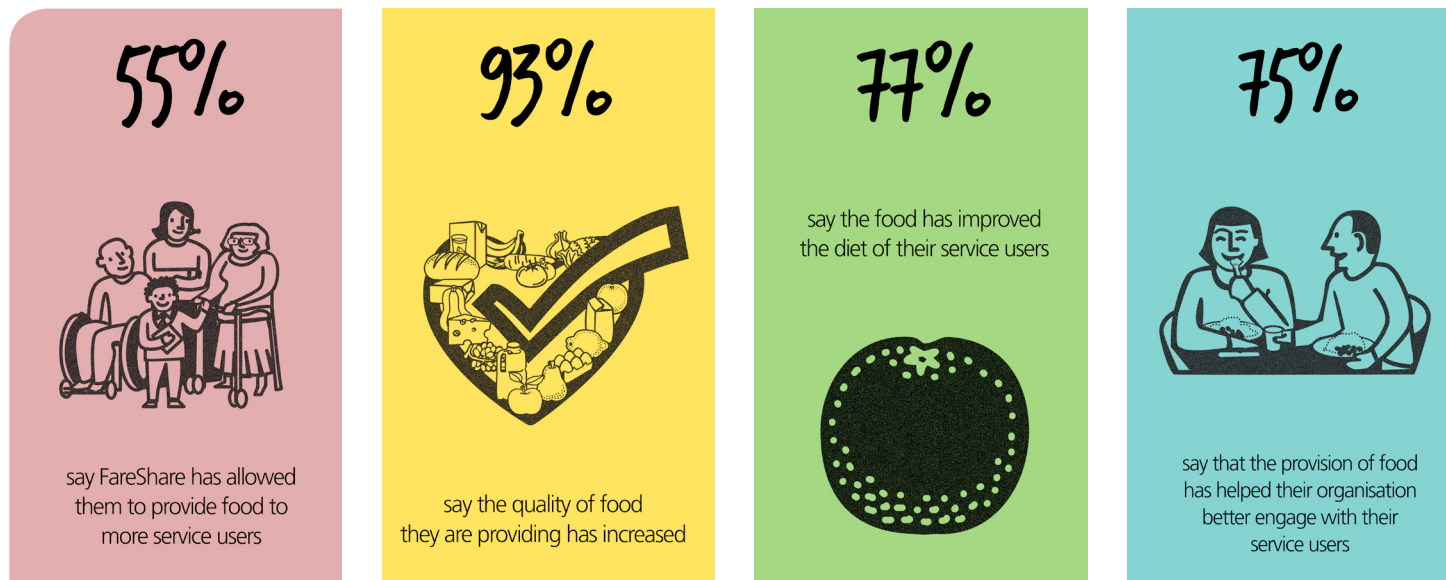
Benefits to your organisation

There are many benefits of becoming a FareShare charity member including:

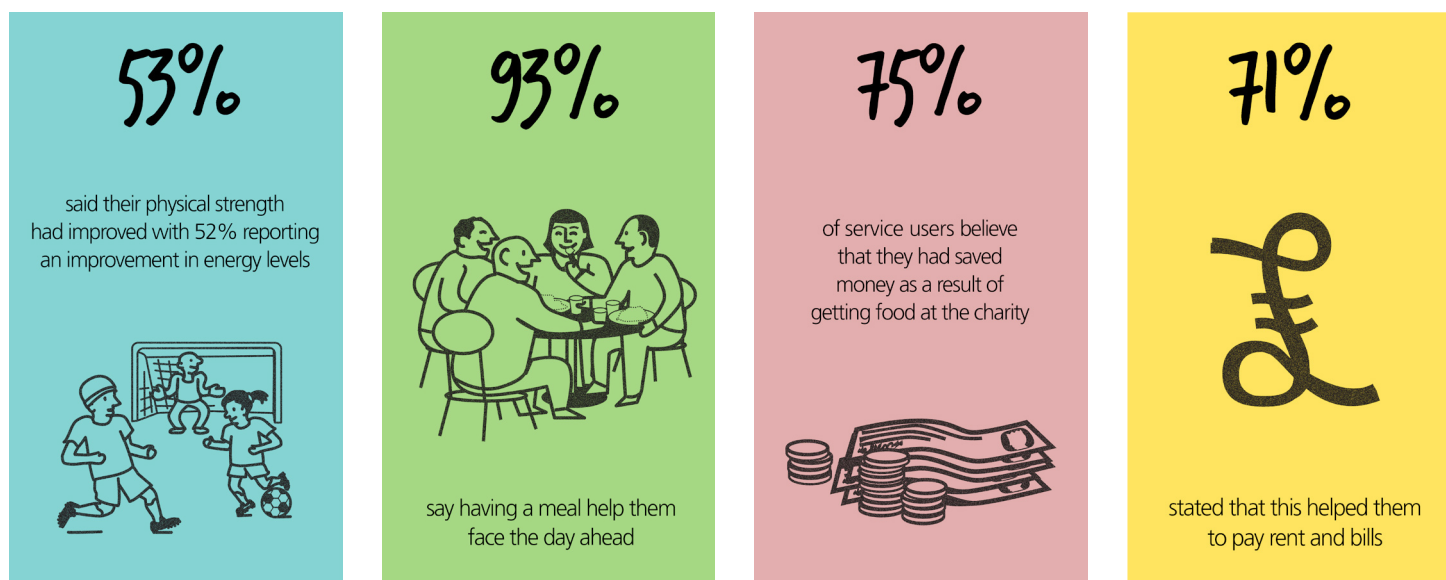
- Access to a wide range of quality food.
- Reduction in your food spending. For a small fee, our charity members have access to several thousands of pounds worth of food.
- Increased ability to support people beyond the provision of food, as outlined below.

Independent research carried-out by social-research institute NatCen shows the impact of the FareShare food provision.

What the charity members have told us:



What the people who use the services have told us:



How does it work?

If your organisation or project supports vulnerable people in your community and you are either a charity, a not-for-profit organisation, a community group or a social enterprise providing a meal service, please get in touch with us.

In order to become a FareShare charity member, we would ask you to complete an application form following which we will visit your project to discuss food hygiene and safety processes as well as your food requirements. It's not a complicated process and our team can provide advice and help on food safety.

To start the process, [register your interest now](#).

Once you've signed up to become a FareShare charity member, here's what you can expect every week.



[Register your interest](#)

Community Food Membership

FareShare is a non-profit charity and to remain sustainable, our Regional Centres charge charity members a nominal fee to cover operational costs, which include warehouse space, chillers, delivery vehicles and fuel. The fee for FareShare South West charity members is between £12 and £60 per week depending on quantity of food required.

Membership fee:



Collection from FareShare South West

You collect the food yourself from our warehouse in Bristol. If you receive chilled food, you must bring a chill box to transport the food.

From
£ 150/Quarter



Local Collection Points

You collect the food yourself from a Local Collection Point (LCP), close to your project. This option is dependent on the existence of an LCP near you and we are currently working to set up LCPs across the South West.

From
£ 175/Quarter



Delivery

We deliver to your project using our FareShare vans. You then check and accept the order. This option is dependent on a van with space for your order being available in your area.

From
£ 200/Quarter

What your membership includes:

- ✓ Supply of quality food - the equivalent of up to 3 trolleys per week
- ✓ Creation of your food profile and needs
- ✓ Advice and guidance regarding food safety best practice from trained staff
- ✓ Access to additional non-food items when they become available
- ✓ Volunteering opportunities
- ✓ Reporting on volumes and types of food received, for your monitoring purposes



FareShare always aims to provide good value food. According to recent research by NatCen, our charity members estimate that if they had to replace the food they receive from FareShare, it would cost them an additional **£7,900 per year on average**.

Join our Network

Still not sure? Read what some of our charity members are saying:



“

We can't emphasise enough the value of the food we receive.

Before we worked with FareShare we were only providing tinned food which is not adequate in sustaining health for those living in extreme poverty over a long period of time.

FareShare provide an absolutely amazing service that normalises our clients' diets and makes them feel like everybody else.”

Teresa Clements, Project Manager
at Brushstrokes Community Project

“

Having a relationship with FareShare has in the first year reduced our food bill by 30%. As a charity, this has enabled us to put more money towards the cost of day trips, entertainment and activities. It is a bit like fundraising in reverse!”

Erica Ross, Day Centre Manager
at Disabled People's Contact

“

Food is important for many of the children that we work with as they might not get access to healthy food at home. Fareshare has enabled us to offer food without fear of breaking the bank and the money that it will save will enable us to buy equipment for children's play. Thank you!”

Caroline Haworth, Bath Area Play
Project Co-ordinator



Get in Touch



If you are interested in receiving good food, please contact our team.

Email: info@faresharesouthwest.org.uk

Tel: 0117 954 2220
or [register your interest online](#)



Volunteers are the lifeblood of FareShare.

We are always on the look out for people to join our friendly and busy teams across the UK and especially in the South West region. If you are interested in volunteering [register your interest online](#). We would love to hear from you!



Address: Unit 4,
Little Ann Street, St Judes,
Bristol BS2 9EB

faresharesouthwest.org.uk
Facebook.com/FareShareSouthWest
Twitter.com/FareShareSW